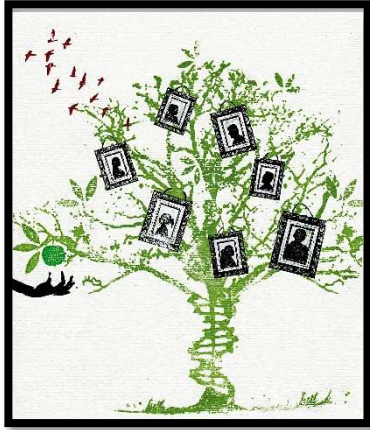


# Le Sueur County Historical Society Research Center



301 NE 2<sup>nd</sup> St, Elysian MN

2024 Season April 19-September 14

Open Friday & Saturday 1:00-4:00

Not open on holidays

Phone (507) 267-4091

Email: [info@lesueurcountyhistory.org](mailto:info@lesueurcountyhistory.org)

Postal mail: P.O. Box 123, Le Center, MN 56057

Facebook: [www.facebook.com/LCHSHISTORY](http://www.facebook.com/LCHSHISTORY)

Website: <http://www.lesueurcountyhistory.org>



## Patron Policies and User Fees

- Research fee: \$10 to use center (free for LSCHS members)
- \$10/hour to have research conducted for you (first 2 hours free for LSCHS members)
- Copies & scans – 25 cents each (B&W) or 50 cents (color)
- No food or beverages while using the Research Center



## Research Resources

- Birth announcements and records
- Cemetery records and maps
- Census records
- Church histories, baptisms & members
- County and state history books
- Death certificates on microfilm
- Family histories, donated books & files
- Immigration/naturalization records
- Maps of Le Sueur Co. – 1874, 1880, 1898 & newer
- Marriage certificates & articles
- Military & veteran records
- Newspapers on microfilm (Elysian, Kasota, Kilkenny, Le Center, Le Sueur, Madison Lake, Montgomery, New Prague, Waterville)
- Obituaries from newspapers (indexed)
- Photograph collection
- Plat books – 1898 and forward
- School records
- Town history books and files

### Tools available for researchers

- Knowledgeable staff to assist
- Copy machines
- Microfilm reader with printer
- Internet access
- Photograph scanning by staff